

TRIM-REDI
 1-800-345-7334
 SCALE IN 1/100 OF AN INCH

SCALE 1"=300'
 JANUARY 1, 1992

✓ indicates survey on file with tax map dept.

* Inadequate description

RELATIVE REPRESENTATION

A	B	C	D
E	F	G	H
I	J	K	L
M	N	O	P

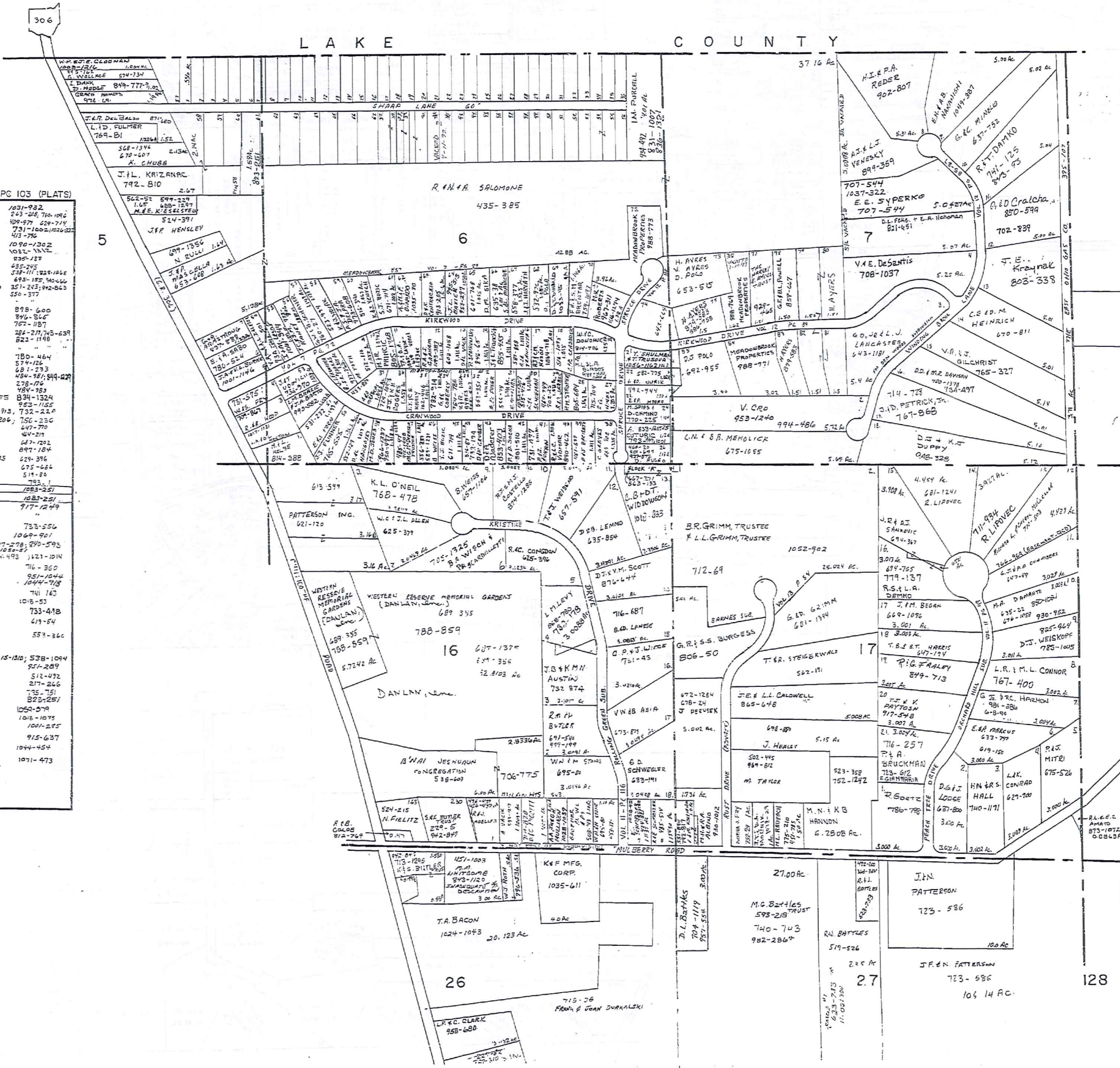
CHESTER B

23

24

25

26



E SHARP SURVEY VOL 6-PC 103 (PLATS)

1. M. JANTEK	1031-932
2. D. L. CICHELLA	243-208, 710-1096
3. J. SALVO	509-979, 529-714
4. SEBASTIANO & A. DI PAOLO	731-1002, 1000-338
5. B. L. WILDER	413-780
6. L. W. R. PHILLIPS	1090-1302
7. W. D. VANDERKAM	1052-1812
8. W. T. ZANARD	829-1812
9. V. ZANARD	652-245
10. A. E. WHITNEY	539-111, 1247-1458
11. A. B. TAYLOR	615-182, 700-666
12. J. T. SKOPE TRUST	733-1143
13. J. M. SMITH	351-243, 192-863
14.	550-377
15. S. J. PLA	818-600
16. M. C. KOVACIC	894-845
17. A. M. E. DINARDO	787-1057
18. C. T. G. BREZINA	284-217, 743-639
19. A. D. OYBRAIN	822-1148
20. J. A. WARGELIN	780-464
21. W. J. COOPER	574-126
22. J. P. DOUMBOVIC	681-733
23. J. D. SOVIC	484-981, 849-429
24.	278-171
25. J. C. ADAMS	1077-575
26. M. R. J. KOSLEY	834-1324
27. F. RUZIC	989-913, 732-220
28. C. E. HECKMAN	661-1206, 756-236
29. B. J. M. REESE	647-770
30. R. A. REESE	647-217
31. M. P. HISSY	647-222
32. B. W. DAVID & L. R. KLAUSS	897-184
33. T. A. MCBRUL	627-515
34.	675-384
35. D. WEY	W-20 #38
36. D. COOPER TRUST	783-1
37. K. R. KEGLOVIC (W-20)	1093-221
38. K. R. KEGLOVIC	1093-221
39. R. A. CALABRESE	917-1249
40.	733-1
41. H. T. J. RACHANSKI	733-554
42. M. T. WACLANSKI	1069-901
43. T. R. VERNON	997-278, 270-593
44. D. A. KRÄMER	764-452, 1121-1014
45. G. W. S. L. STUMPF	716-360
46. R. A. SCHAUER	951-1044
47. H. L. R. & R. O. BASSER	1044-718
48. G. D. KLEINSORGE & J. J. MOORE	741-163
49. B. M. VILVIL	1018-53
50. R. A. SHULTIS	733-418
51. N. G. GRASSI	419-54
52. R. K. SNISHA	559-346
53. S. J. STEBIC	1018-1010, 538-1094
54. M. A. E. J. PETTY	911-289
55. F. C. CARLO	511-472
56. E. SHARD	271-246
57. S. L. SHARD	735-751
58. A. C. MULLIKEN	823-251
59. J. M. MORTAL	1054-579
60. LINCOLN TRUST CO.	1018-1075
61. G. D. WHITE & M. D. DAK	1001-285
62. G. D. WHITE	915-637
63. J. G. WOODWORTH & T. H. WARENKA	1044-454
64. T. KEGLOVIC	1071-473
65. T. KEGLOVIC LIVING TRUST	

SCALE 1"=300'
JAN. 1, 1997

TOWN-REDEI
 1-800-345-7334
 SCALE IN 1/10 OF AN INCH

210

Indicates survey on file with tax map dept.

* Inadequate description

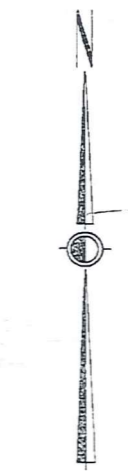
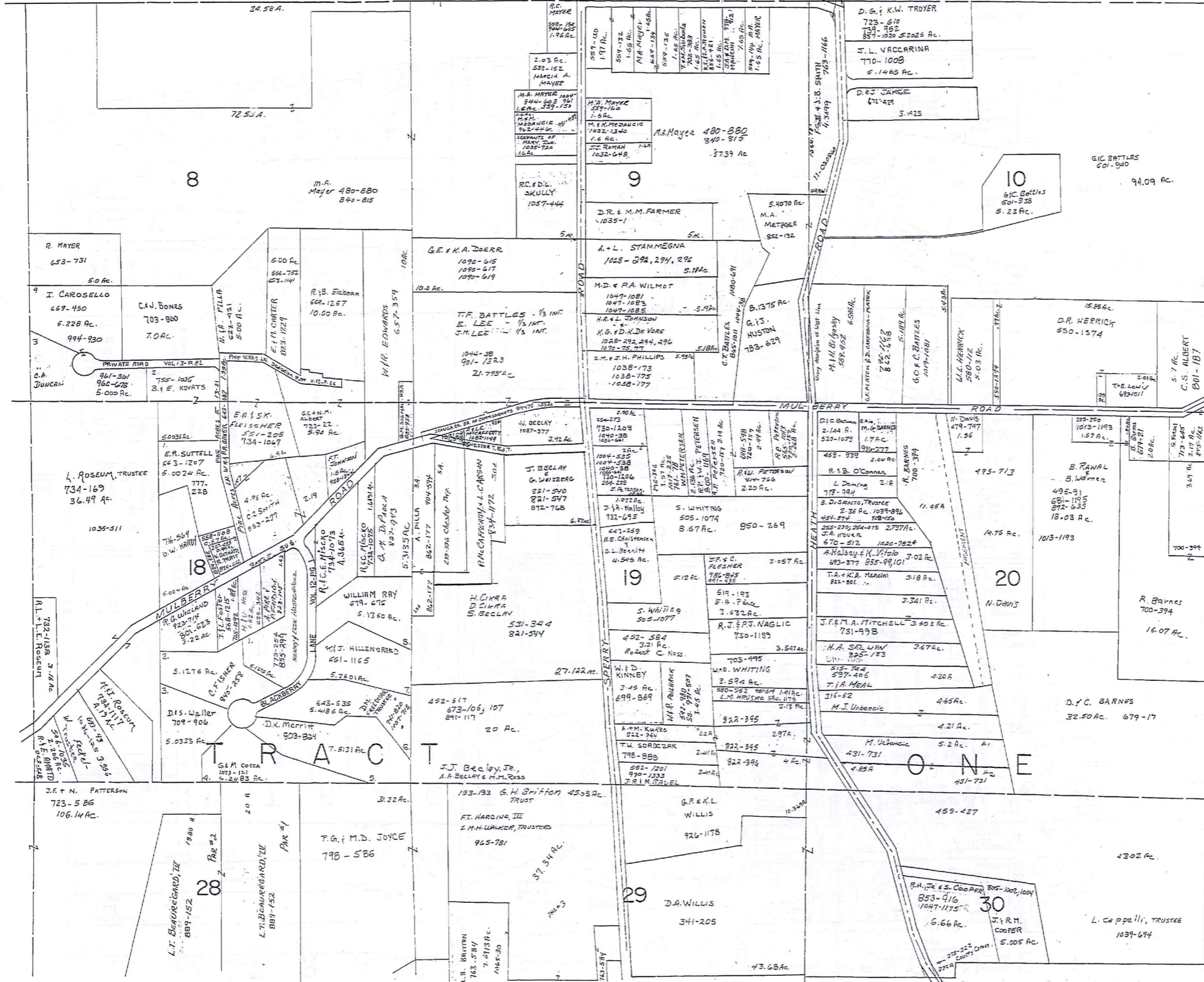
RELATIVE REPRESENTATION

A	B	C	D
E	F	G	H
I	J	K	L
M	N	O	P

CHESTER C

L A K E G E M R O A D C O U N T Y

C H A R D O N T O W N S H I P



SCALE 1"=300'

TW-REDI
1-800-245-7334
SCALE IN 1/16 OF AN INCH

Indicates survey on file with tax map

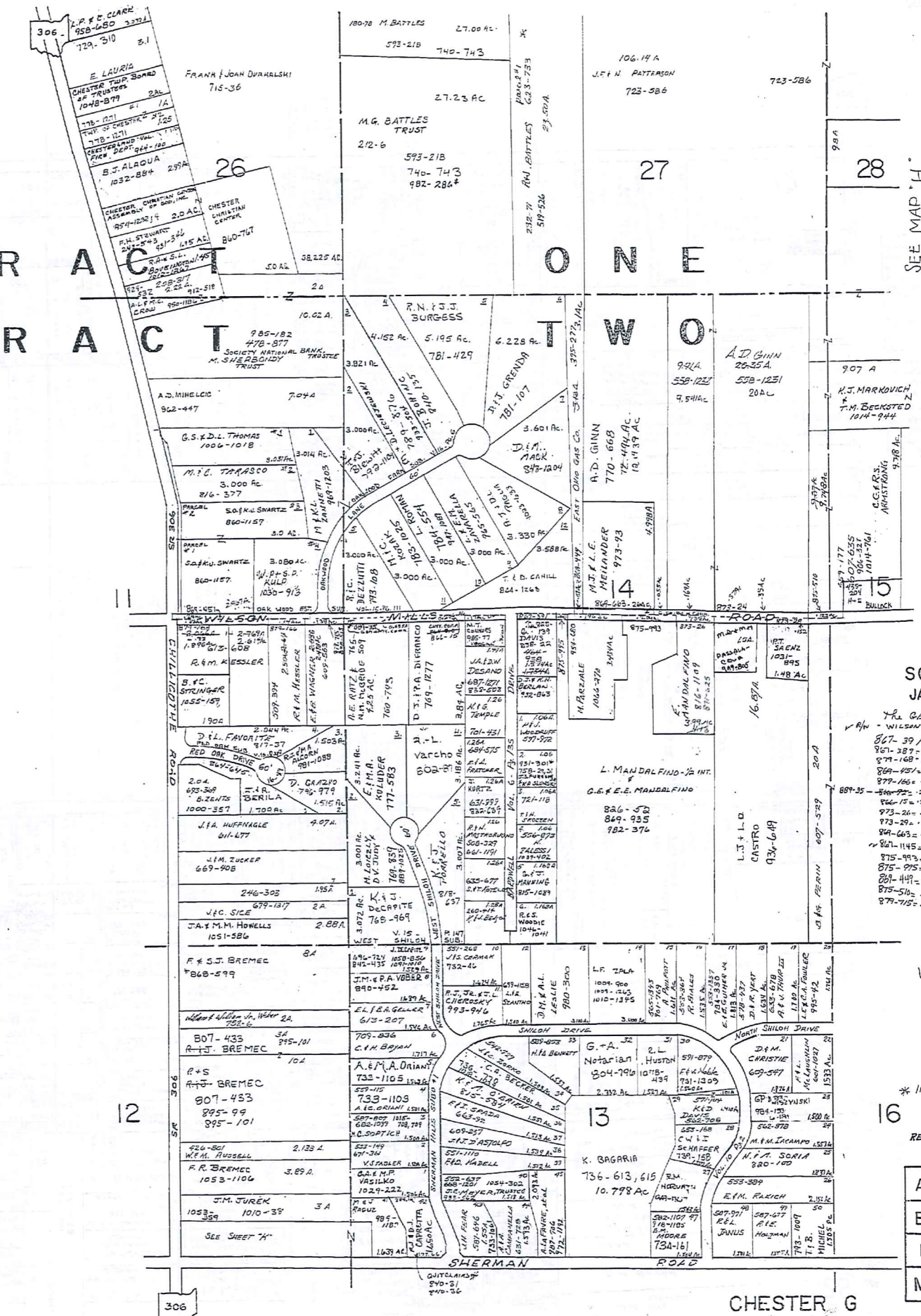
*Inadequate description

JANUARY 1, 1997
RELATIVE REPRESENTATION

A	B	C
E	F	G
I	J	K
M	N	O

CHESTER D

TRACT ONE



SEE MAP "H"

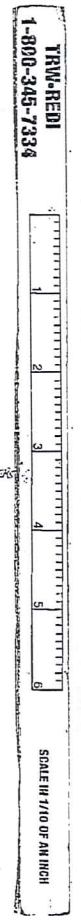
SCALE 1"=300'
JAN. 1, 1996

TRADE FAUCIA CO. Bd. of COMMISSIONERS
v. R.H. WILSON MILLS CO.
867-39 1/2 = .16 AC
867-387 = .14 AC
879-168 = .22 AC
869-401 = .27 AC
879-165 = .14 AC
887-35 = .50 AC
866-15 = .20 AC
873-20 = .13 AC
873-29 = .12 AC
869-663 = .24 AC
867-1145 = .17 AC
875-993 = .20 AC
875-975 = .04 AC
887-441 = .13 AC
875-510 = .12 AC
879-715 = .13 AC

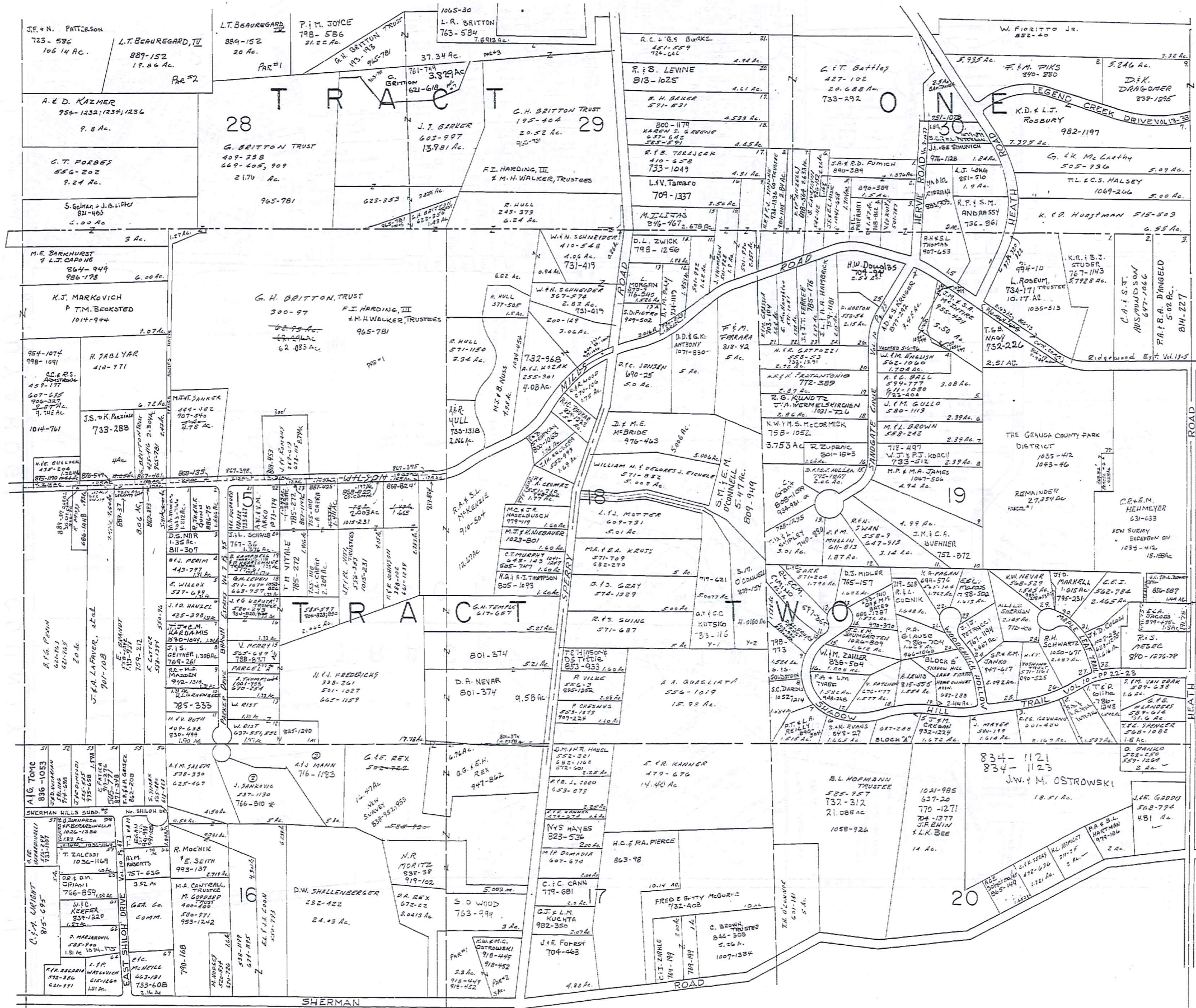
✓ indicates survey on file with tax map dept.

* INADEQUATE DESCRIPTION /
JANUARY 1, 1997
RELATIVE REPRESENTATION

A	B	C	D
E	F	G	H
I	J	K	L
M	N	O	P



CHESTER G



SCALE 1" = 300'

✓ 1/2 Section 19, 19A
 ✓ 1/2 Section 19, 19B
 ✓ 1/2 Section 19, 19C
 ✓ 1/2 Section 19, 19D
 ✓ 1/2 Section 19, 19E
 ✓ 1/2 Section 19, 19F
 ✓ 1/2 Section 19, 19G
 ✓ 1/2 Section 19, 19H
 ✓ 1/2 Section 19, 19I
 ✓ 1/2 Section 19, 19J
 ✓ 1/2 Section 19, 19K
 ✓ 1/2 Section 19, 19L
 ✓ 1/2 Section 19, 19M
 ✓ 1/2 Section 19, 19N
 ✓ 1/2 Section 19, 19O
 ✓ 1/2 Section 19, 19P

✓ indicates survey on
 file without map
 clapt.

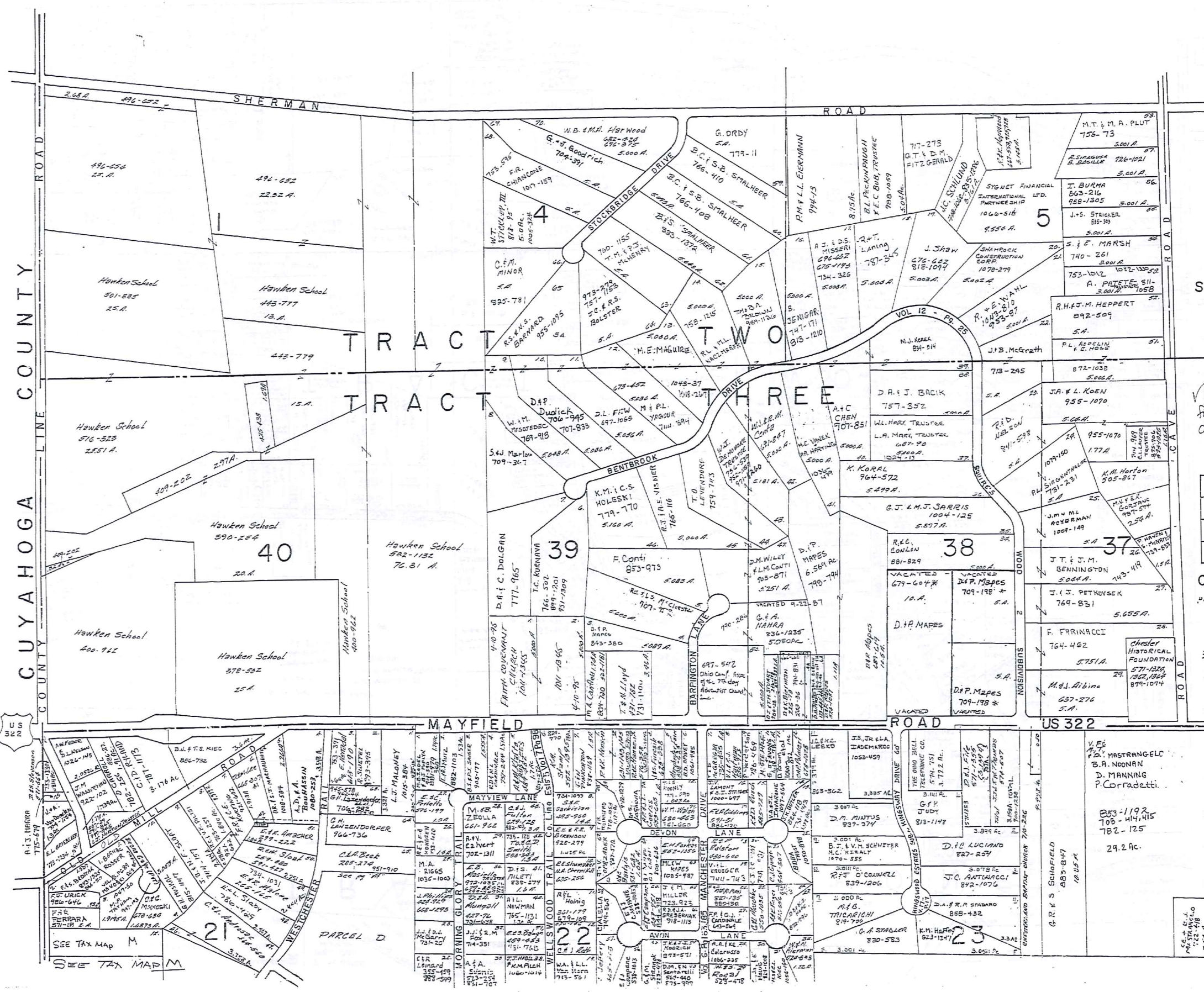
* inadequate description

JANUARY, 1997
 RELATIVE REPRESENTATION

A	B	C	D
E	F	G	H
I	J	K	L
M	N	O	P

CHESTER H

TOWN-REID
 1-800-345-7334
 SCALE IN FEET OR INCHES



CUYA HOGA COUNTY

SCALE 1"=300

✓ indicates survey on file with tax map dept.

JANUARY 1, 1997

A	B	C	D
E	F	G	H
J	K	L	
M	N	O	P

CHESTER !
RELATIVE REPRESENTATION

* Inadequate description

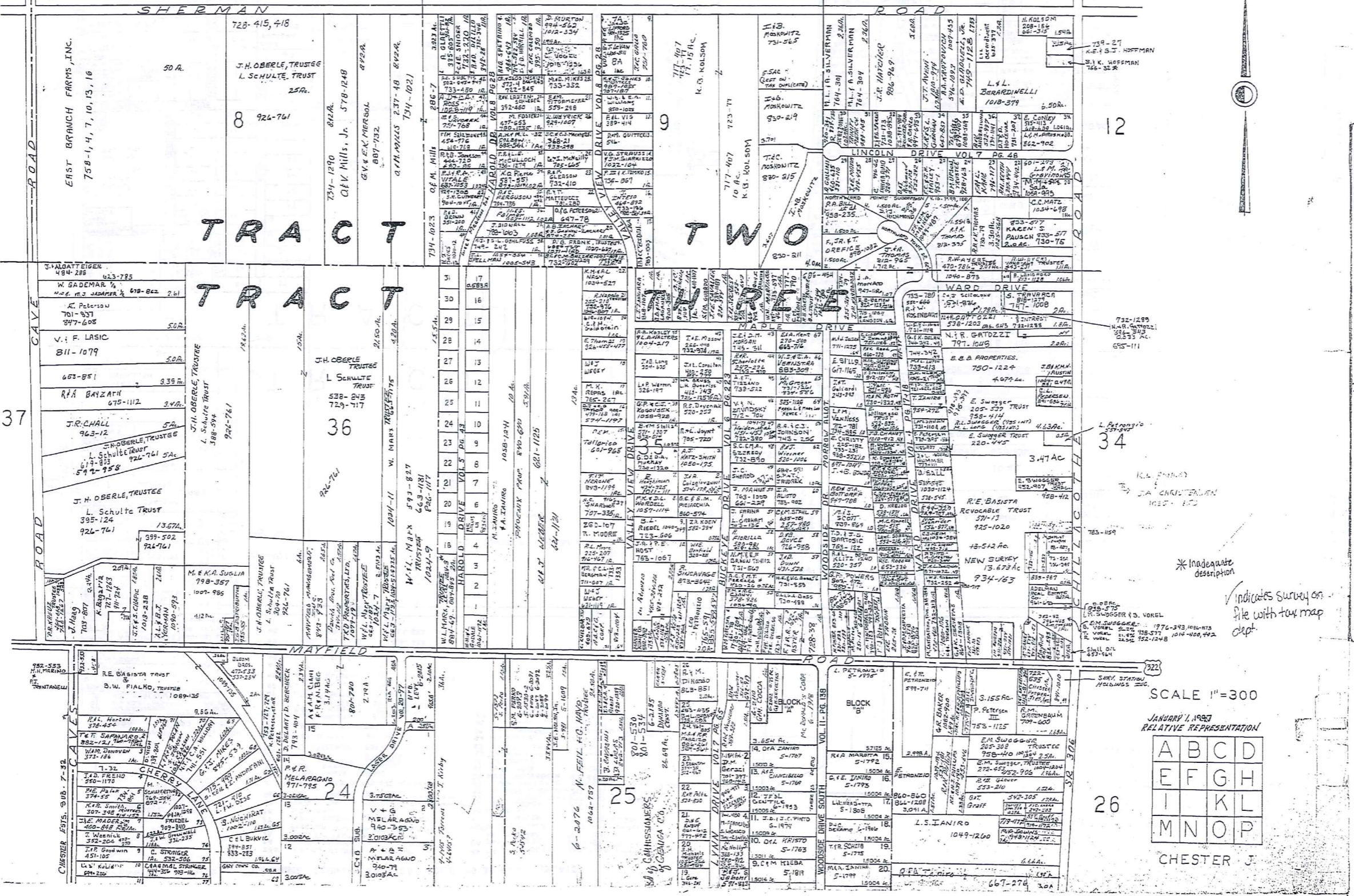


CHESTER

1-800-345-7334 TRM-REED

SCALE IN FEET OF AN INCH

HAROLD DRIVE		ALLOT. VOL. 5 PG. 43	
1	J. T. Eick	121-9	21
2	P. P. NITRAN	154-918	22
3	M. H. GASSO	687-627	23
4	M. E. PAVONI	574-296	24
5	M. L. WILHE	102-102	25
6	B. J. PLATEK	711-1045	26
7	A. A. GARGIULO	916-985	27
8	E. L. VANVUR	741-1184	28
9	D. NEWTON	708-1244	29
10	W. J. P. P. P.	557-557	30
11	M. N. S. DESORAVIS	102-102	31
12	J. J. P. P.	411-202	32
13	J. E. S. DURCHAK	1029-518	33
14	M. G. SERRI	512-574	34
15	J. P. P. P.	133-484	35
16	P. P. P.	753-344	36
17	E. P. P.	1051-174	37
18	J. A. DADDARIO	765-881	38
19	J. P. P.	102-102	39
20	J. P. P.	102-102	40



TRW-REDI
1-800-365-7334

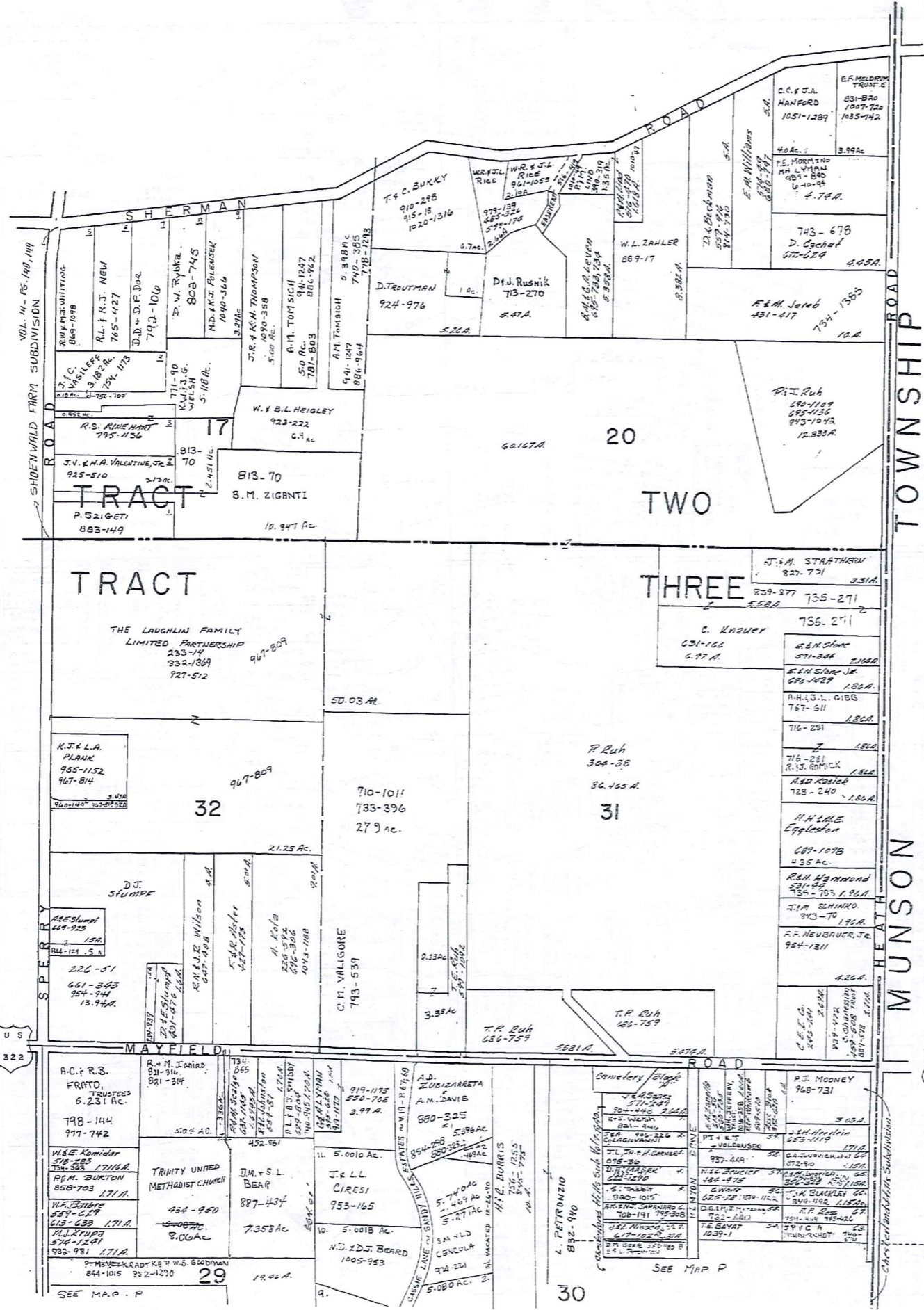
217

SCALE 1"=300

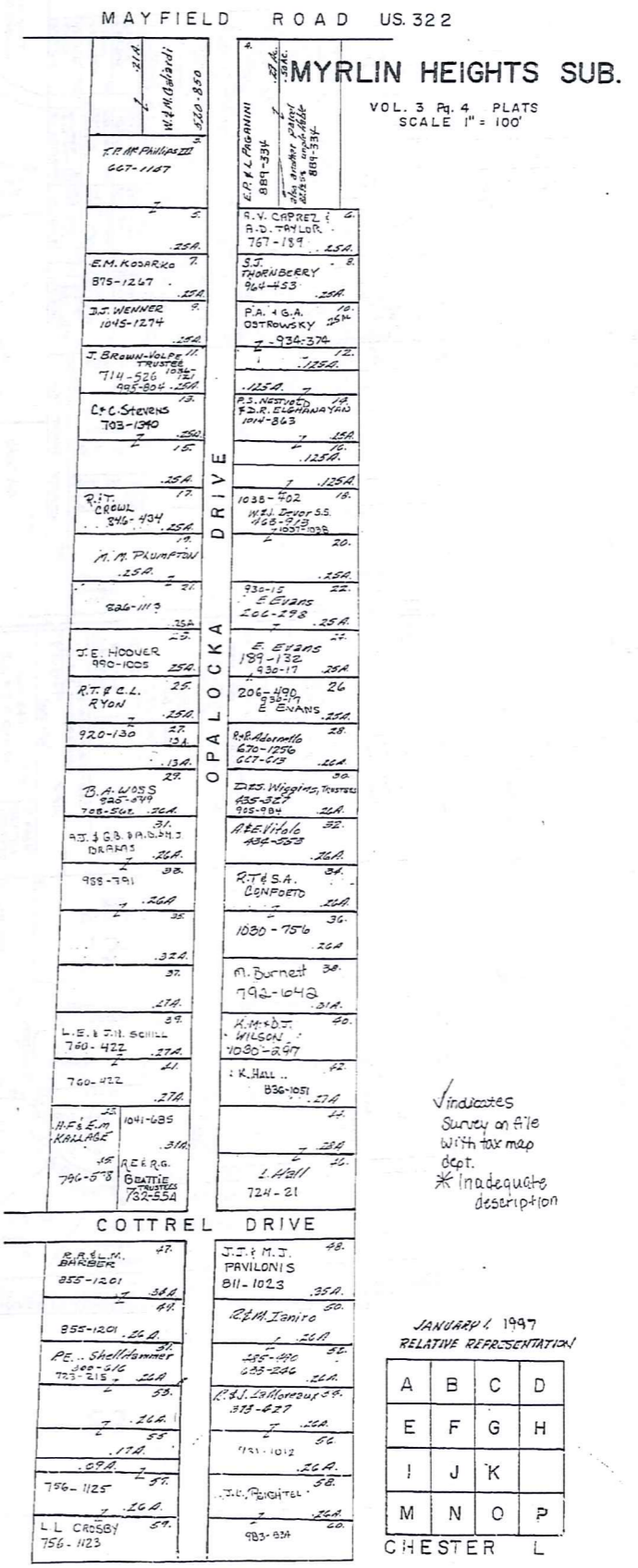
JANUARY 1, 1993
RELATIVE REPRESENTATION

A	B	C	D
E	F	G	H
I	J	K	L
M	N	O	P

CHESTER J.



SCALE 1"=300'
JAN 1, 1983



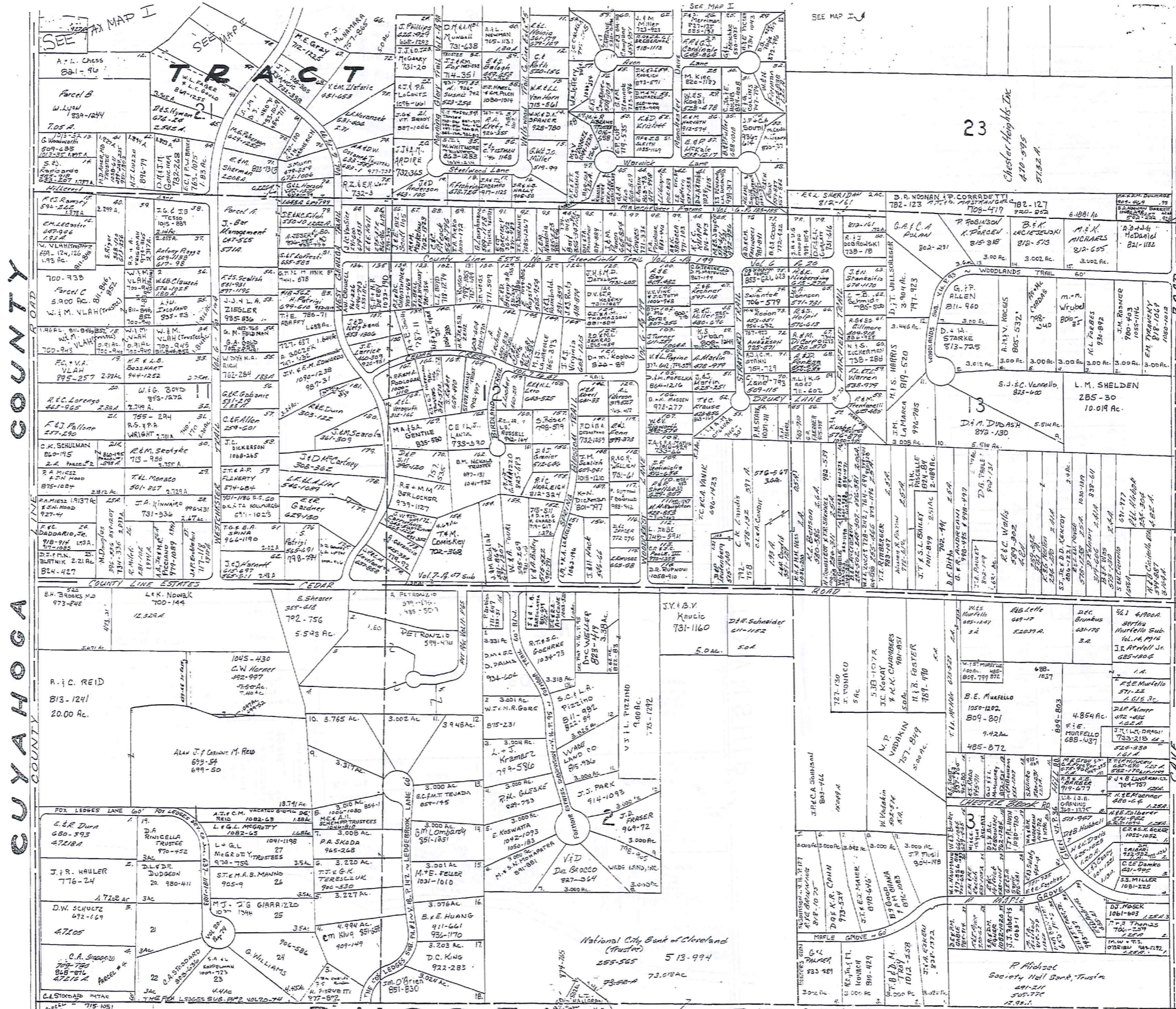
√ indicates survey on file with tax map dept.
* Inadequate description

JANUARY 1, 1997
RELATIVE REPRESENTATION

A	B	C	D
E	F	G	H
I	J	K	
M	N	O	P

CHESTER L





CUYAHOGA COUNTY

SCALE 1"=300'
JAN. 1, 1997

1-800-365-7334
SCALE IN 1/10 OF AN INCH

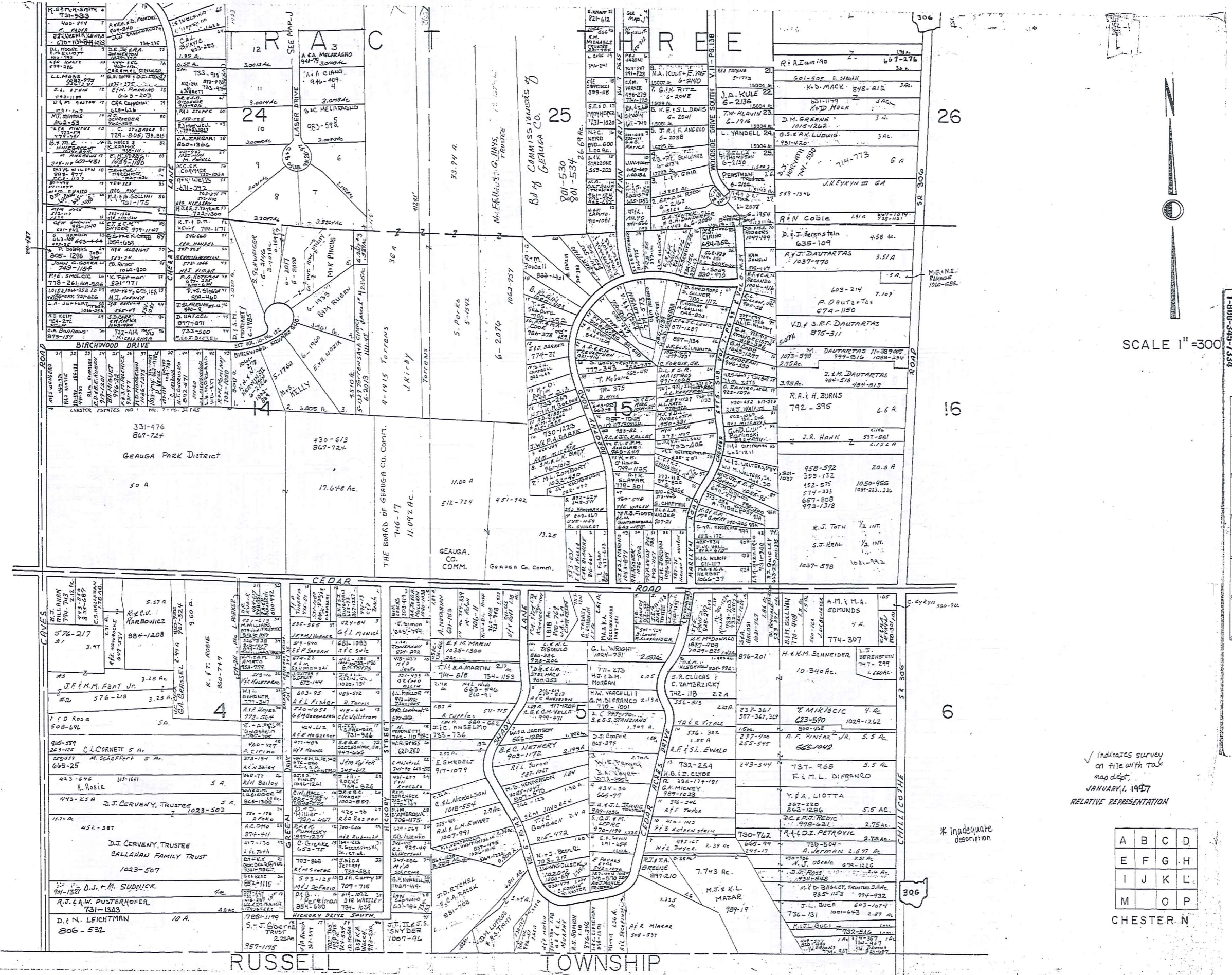
* Inadequate description
✓ indicates survey on file with tax dept.

RELATIVE REPRESENTATION

A	B	C	D
E	F	G	H
I	J	K	L
M	N	O	P

CHESTER M

RUSSEVILLE TOWNSHIP



SCALE 1" = 300'

TOWN-RED
1-800-345-7334

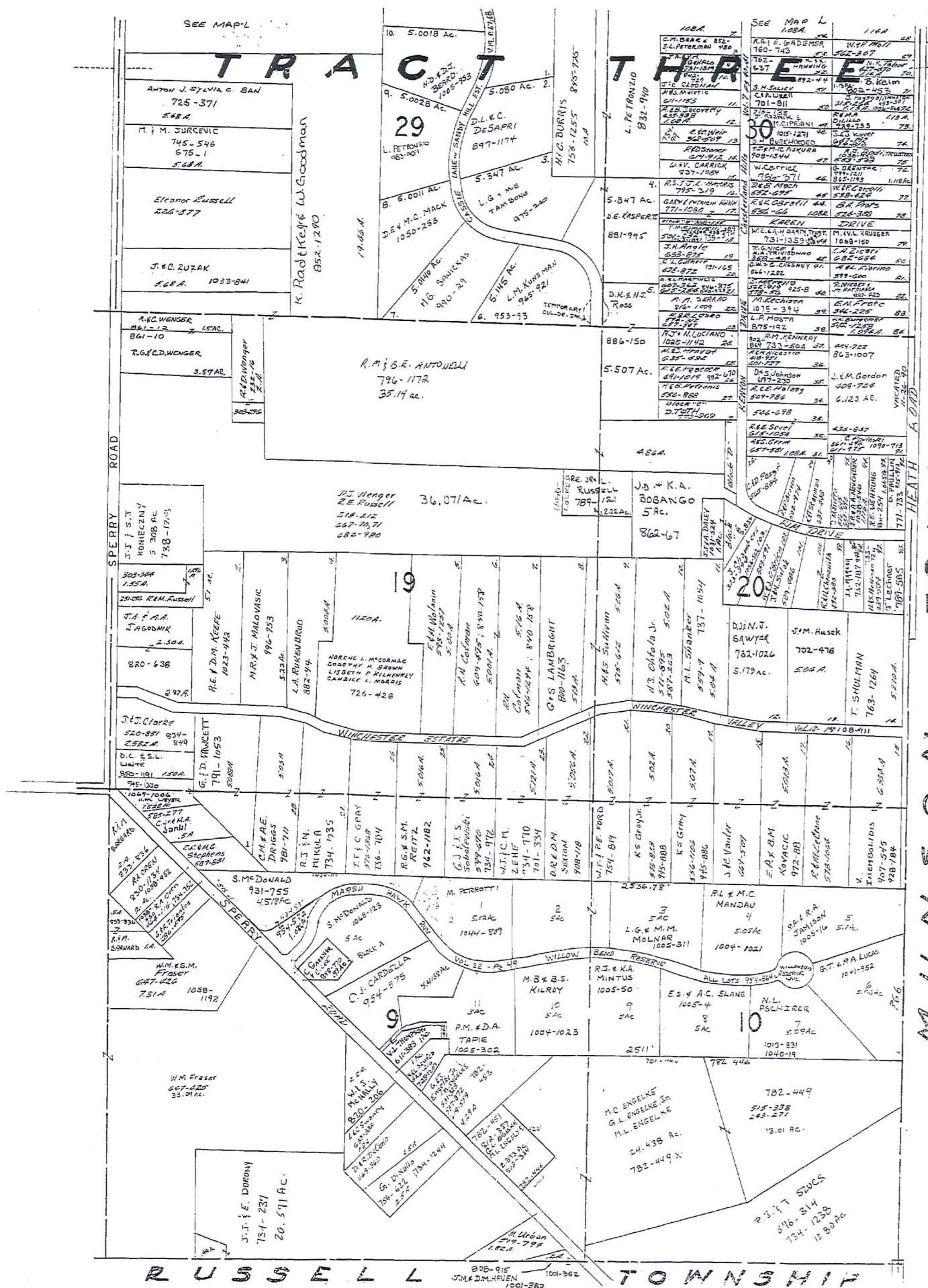
✓ indicates survey on file with tax map dept. JANUARY, 1997 RELATIVE REPRESENTATION

A	B	C	D
E	F	G	H
I	J	K	L
M	O	P	

CHESTER N

* inadequate description

Map content includes numerous parcel labels with owner names and acreage. Key streets shown include BIRCHWOOD DRIVE, CEDAR ROAD, RUSSELL ROAD, and CHILLICOTHE ROAD. Section numbers 24, 25, and 26 are clearly marked. A large parcel in the center is labeled 'GEAUGA PARK DISTRICT' with 50 A and 17.648 Ac. Other notable parcels include 'THE BOARD OF GEAUGA CO. COM. 746-17 11.092 AC.' and 'GEAUGA CO. COMM. 512-724 451-142'. Owners listed include J.F. M. FANT JR., D.J. CERVENY, R.J. TOTI, and many others. The map also shows 'LAZER DRIVE' and 'MICKROY DRIVE SOUTH'.



MUNSON TOWNSHIP

SCALE 1" = 300'
 JANUARY 1, 1997

RELATIVE REPRESENTATION



* inadequate description
 ✓ indicates survey on file with tax map dept.

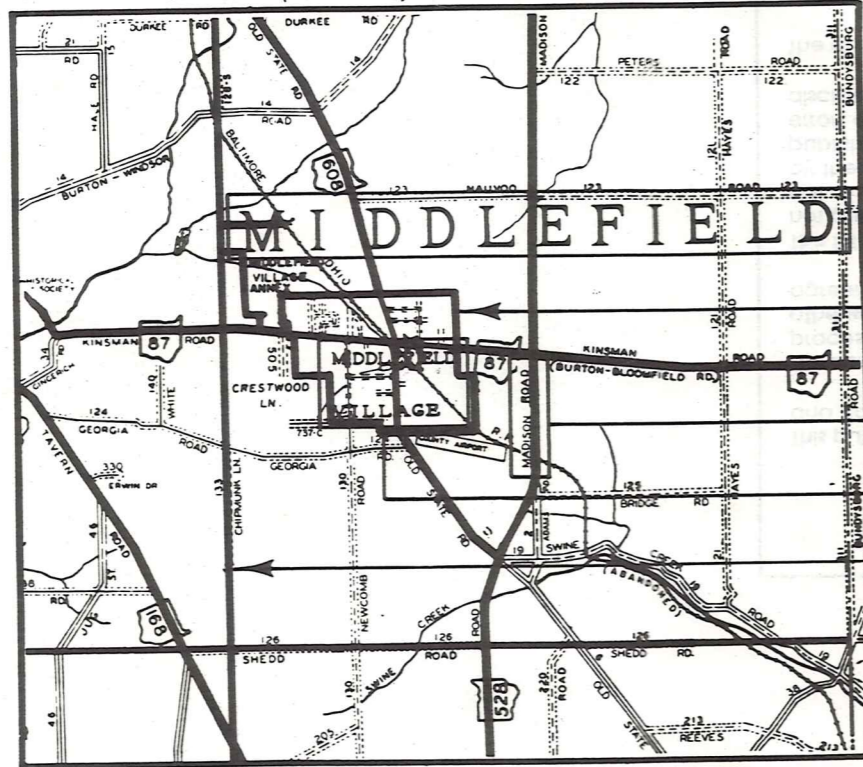
A	B	C	D
E	F	G	H
I	J	K	L
M	N	O	

CHESTER P

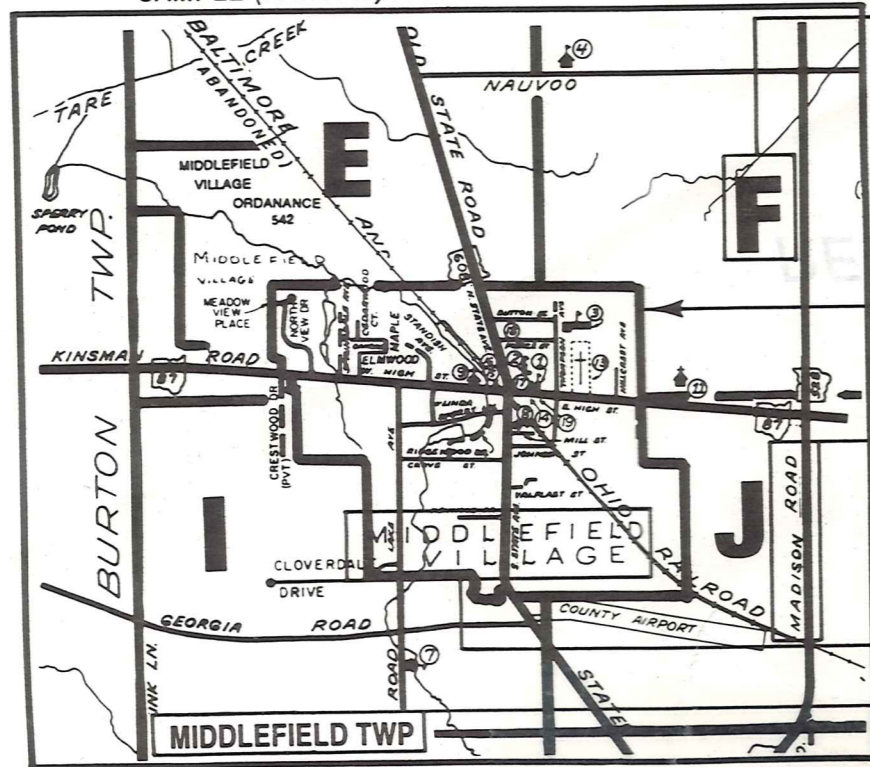
Explanation and Use Sheet for Geauga County, Ohio

A

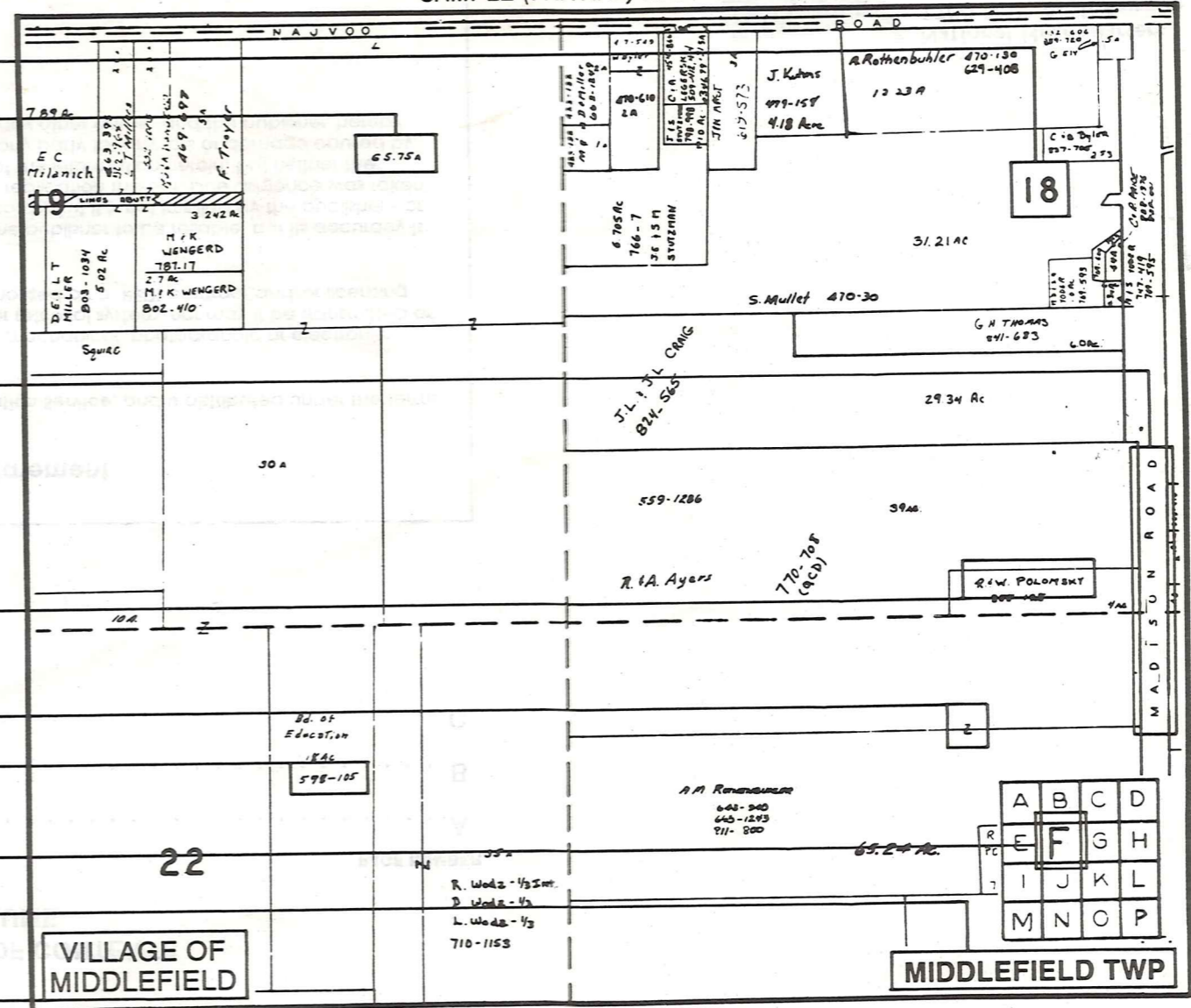
SAMPLE (PARTIAL) COUNTY INDEX MAP



SAMPLE (PARTIAL) MUNICIPALITY INDEX MAP



SAMPLE (PARTIAL) MAP PAGE



- Tract Lot Number
- Acreage
- Township Name
- Village Boundary
- Street Name
- Village Name
- Township Boundary
- Owners Name
- Denotes Continuous Ownership
- Deed Book & Page
- Map Page Number
- Township Name
- Village Name

- Village Boundary
- Street Name
- Village Name
- Township Name

USE OF THE MAP VOLUME

1. LOCATE THE GENERAL AREA OF INTEREST ON THE COUNTY INDEX MAP AND NOTE THE MUNICIPALITY NAME (TOWNSHIP OR VILLAGE).
 2. REFER TO THE TABLE OF CONTENTS AND NOTE THE BEGINNING ATLAS PAGE NUMBER FOR THE MUNICIPALITY OF INTEREST.
 3. TURN TO THE PAGE INDICATED, ON THIS PAGE WILL APPEAR AN INDEX MAP FOR THAT MUNICIPALITY.
 4. LOCATE THE GENERAL AREA OF INTEREST AND NOTE THE MAP PAGE NUMBER. THIS MAY BE EITHER A LETTER OR A NUMBER.
 5. MAP PAGES ARE IN ALPHABETICAL (OR NUMERICAL) SEQUENCE FOLLOWING THE MUNICIPALITY INDEX MAP. FOLLOW SEQUENCE TO THE MAP PAGE INDICATED.
 6. LOCATE SPECIFIC PARCEL OF INTEREST AND NOTE THE DESIRED INFORMATION.
- NOTE: ON SOME MAPS YOU MAY BE REFERRED TO A DETAIL SHEET SHOWING AN ENLARGEMENT OF THE AREA. THESE MAPS ARE FOUND AT THE END OF THE REGULAR MAP PAGES IN EACH MUNICIPALITY IN EITHER ALPHABETICAL OR NUMERICAL SEQUENCE.
- NOTE: CHARDON VILLAGE HAS TITLE SHEETS. TO LOCATE OWNERS NAME, NOTE THE PARCEL NUMBER, REFER TO THE TITLE PAGE FOLLOWING THE MAP OF INTEREST, FOLLOW NUMERICAL SEQUENCE TO THE PARCEL NUMBER OF INTEREST AND NOTE THE DESIRED INFORMATION. IN ALL OTHER MUNICIPALITIES THE OWNERS NAME APPEARS ON THE MAP PAGE.